

ICMSCosts Autodesk® Revit™ 2026 plug-in

V1.0.0

This Revit Add-In provides basic benchmarking support with Revit by connecting to the ICMSCosts server.

A valid ICMSCosts license (either a full or partial API license) is required. Licenses can be purchased at: <http://icmscosts.com/about/features>

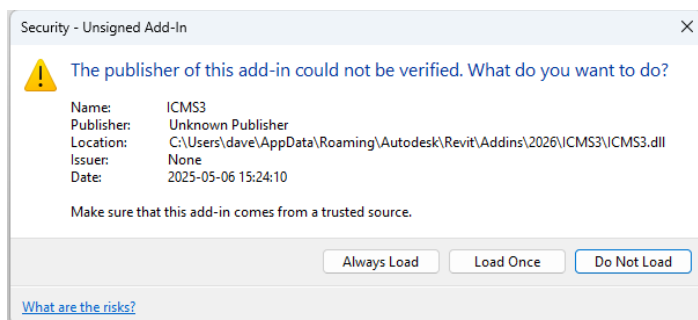
Installation Instructions

To install the ICMS Costs Revit 2026 add-in, download the zip file from: <https://icmscosts.com/download/plugin> which downloads the latest version (current version is v1.0.0)

This zip file includes a folder, ICMS3 and the ICMS3.addin configuration file.

Place both the configuration file and ICMS3 folder in your Revit Add-In directory (usually C:\Users\<username>\AppData\Roaming\Autodesk\Revit\Addins\2026

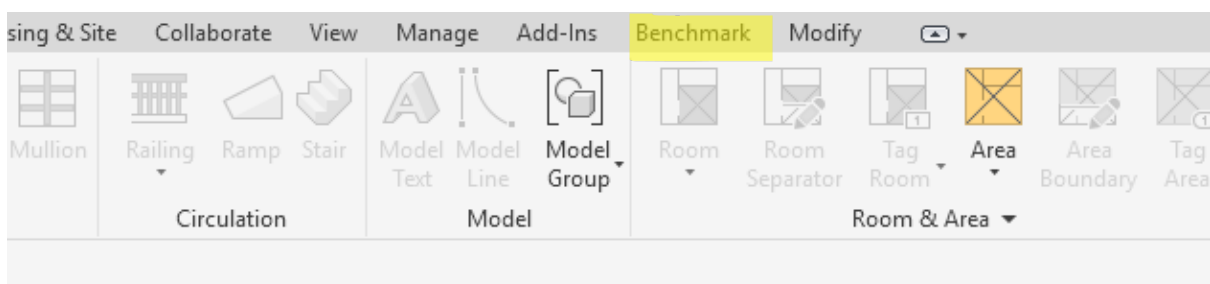
Start Revit. You may see this warning:



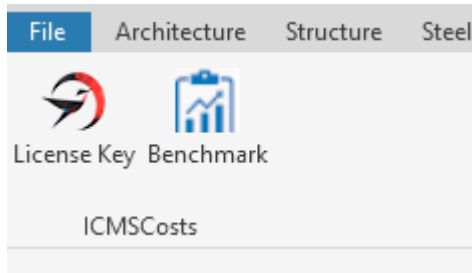
Selecting "Always Load" will suppress this warning message.

Functionality

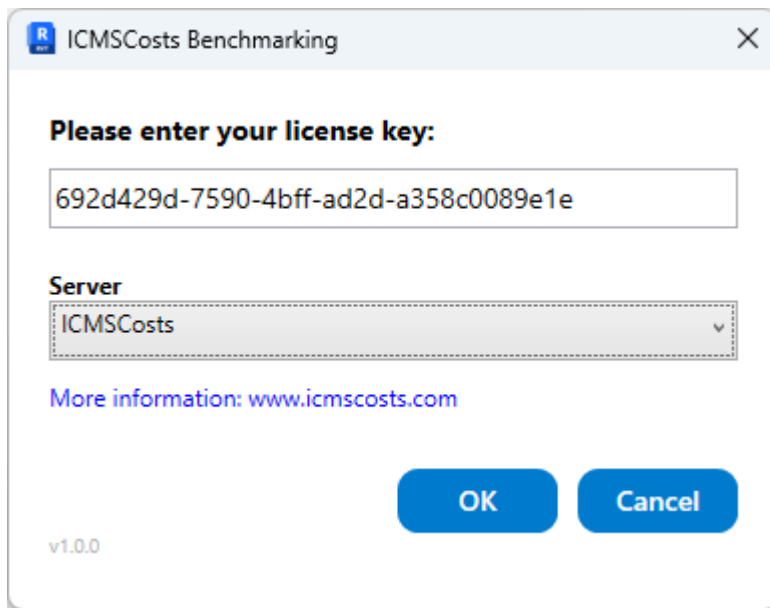
The Benchmarking feature is available from the ribbon menu as shown ("Benchmark" is located to the right of "Add-Ins"):



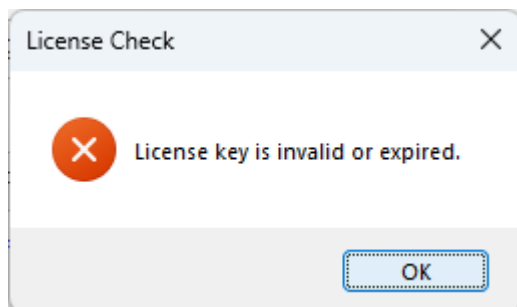
Selecting the Benchmark option generates the following menu:



The license key button allows the selection of the server (the ICMS Costs production and experimental servers), along with entry of the license key:



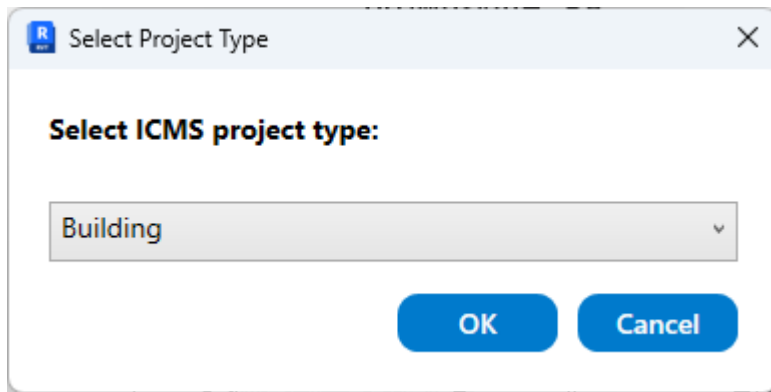
Successful key entry will result in a silent acceptance after pressing “OK” otherwise:



Please contact ICMSCosts through our contact page if you have any questions or issues about this. Note licenses for the experimental server are usually different to those of the production server, and are not interchangeable.

Benchmarking

By selecting the Benchmark button, a project type selection option will be presented. The plugin attempts to guess the project type but this maybe empty, by default, and can be changed without issue:



Project types are one of the following:

- Building
- Roads, Runways and Motorways
- Railway
- Bridge
- Tunnel
- Waste water treatment works
- Water treatment works
- Pipeline
- Well/borehole
- Power-generating plant
- Chemical plant
- Refinery
- Dam/reservoir
- Mine/quarry
- Offshore structures
- Nearshore works
- Ports
- Waterway works
- Land formation and reclamation

Depending on your selection, the following benchmarking window will appear:

Benchmark Cost Estimation

Building IPMS 1 Area (m²)

Country

Afghanistan

City

Aibak

Benchmarking Set

<default>


Calculate

Note the first parameter is context specific and will change depending on the selected project type.

Select the country and city for the proposed site of construction.

Select the Benchmarking Set for the appropriate project comparables to use for this benchmark.

Note the trial version of this software only allows for the default benchmark set. Paid for licenses allow for multiple benchmark groupings to be defined at ICMSCosts.com and each group is selectable from this Benchmarking window.


Benchmark Cost Estimation
✕

Bridge Length (m)

Country

City

Benchmarking Set

Est. construction cost: £2,649,887 GBP

Cost Estimate Breakdown

Location Info

Kharpada Bridge BOT Project [415.8%]: ICMSCosts city data unknown city in India -> Paris in France

Inflation Info

Kharpada Bridge BOT Project [269.36%]: World Bank India Wholesale price index [1997 to 2019]

Cost Estimate Information

Acquisition Costs: 0 GBP

Construction Costs: 2.649.887 GBP

The benchmarking window shows the calculation for each benchmarked project and a cost estimation for the ICMS cost groupings (Acquisition, Construction, Renewal, Operational, Maintenance and End-of-life). Note that the benchmarked projects must include this information for the calculation to provide this level of estimation.

Location Info provides the location indices from the source cities to the target site of construction and the Inflation Info shows the inflation details (and source) for the years between construction of the benchmarked projects and the most recent data available. Note this data is often updated at ICMSCosts so benchmarks may change over time.